



Characteristics

LAGA

Main Principles

Owner	Weships INC.
Manager	We Ships Denizcilik ve Ticaret A.Ş.
Type	General Cargo
Built Date	1993
Built Place	PEENE WERFT GMBH - Germany
Port of Registry	St. Johns
Flag	Antigua& Barbuda
Class	Polish Register of Shipping (IACS Member)
Call Sign	V2QW2
IMO Number	9006318
MMSI Number	305821000
Lenght Over All	87,90 M
Lenght Between Perpendicular	81,84 M
Beam Moulded	12,80 M
Draft Summer/Winter	5,47 / 5,35 M
Airdraft - Ballast	20,60 M
WLTC Ballast	5,90 M
GRT/NRT	2449 MT / 1380 MT

Loading Capacities

Deadweight	3710 MT
DWCC	3580 MT
Holds	1
Hold Dimensions	56,60 M x 10,20 M x 8,10 M
Hold Capacity	4676.3 CBM 165.143 CBFT
Box / Open Hatch	Yes / Yes
Hatchcover Type	KVARNER Multifold Crocodile
Hatchcover Dimensions	56,53 M x 10,20 M
Hatchcover Strength	1.53 T/M ²
Tanktop Strength	15.0 T/M ²
TEU Capacity	108 + 72 TEU
Tweendeck	No
Grain Stowage Fitted	Yes
Grain Bulkheads	2 / Movable
Hold Ventilation	Electrical
CO ₂ Fitted	Yes
Main Engine	DEUTZ MWM SBV 8M628 - 1500 kW
Bowthruster	3 Steps Electric Driven 184 kW -250 HP

Ice Class	No
IMO Cargo fitted	Yes
ISM-ISPS fitted	Yes
Owners P&I	Hydor

	Laden	Ballast	
Speed	abt. 9.5 kts	abt. 9.0 kts	
Consumption	3.8 MT	3.7 MT	MGO incl. Aux. Eng.

All details given in good faith but always without guarentee.



Kordonboyu Mah. Çiçeksuyu Sok. Dumankaya Horizon Sit. No: 1/66 Kartal/İSTANBUL



<https://www.we-ships.com>



chartering@we-ships.com

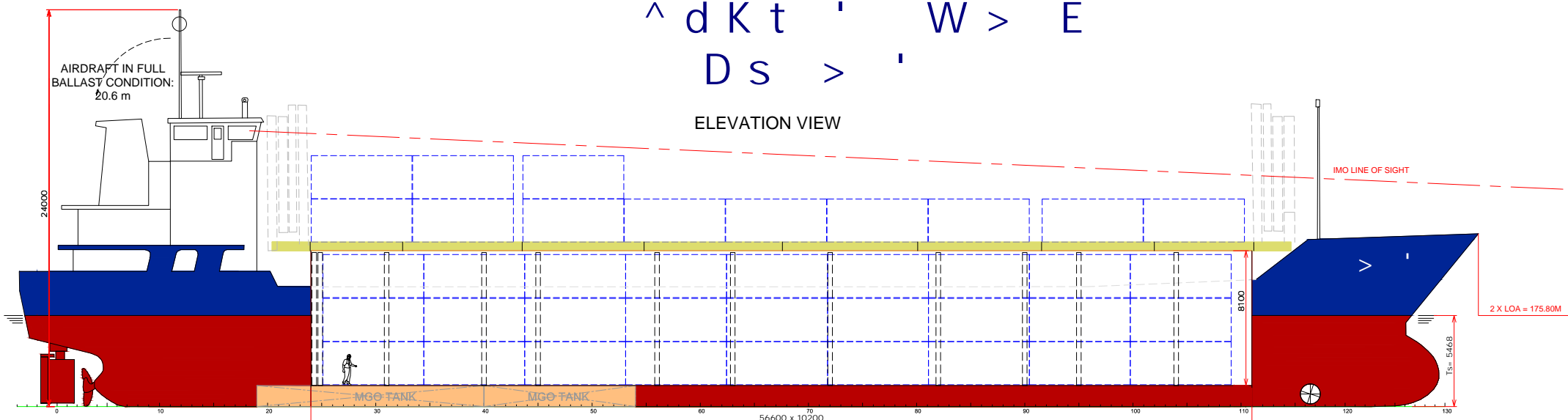


+90(216) 771 56 12

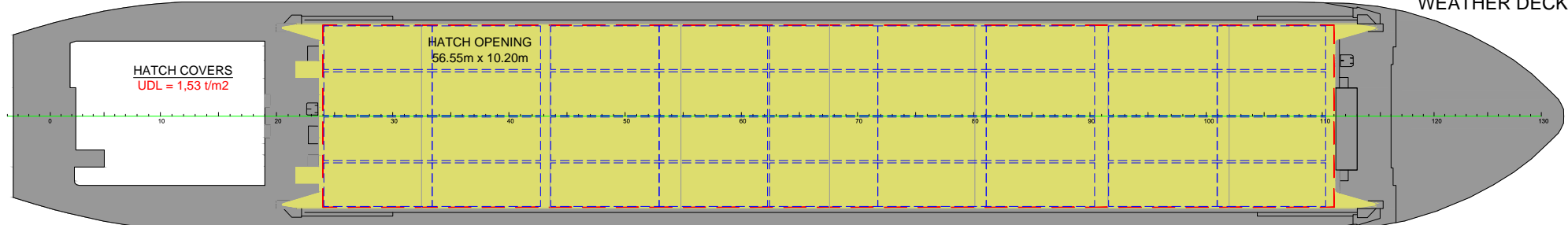
^ d K t ' W > E

D s > ' W > E

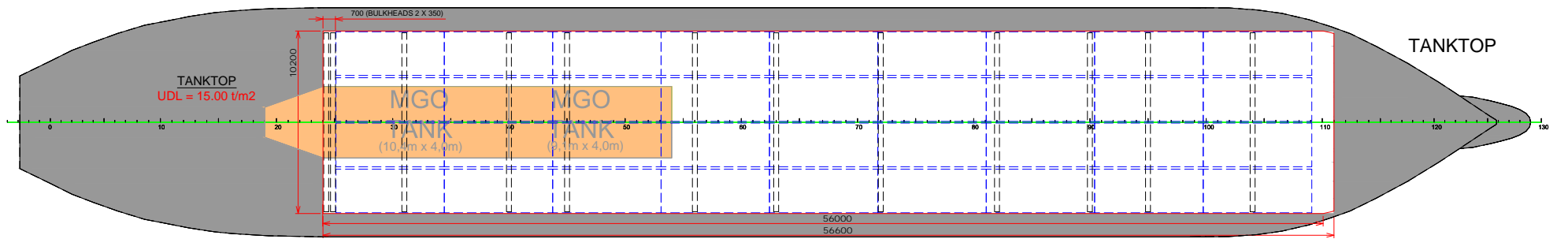
ELEVATION VIEW



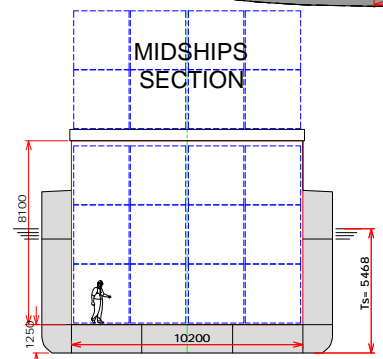
WEATHER DECK



TANKTOP



MIDSHIPS SECTION



NOTE:
DISTANCE FROM WATERLINE TO TOP OF HATCHCOAMING IN FULL BALLAST CONDITION:

5,90 M

PRINCIPAL PARTICULARS

LENGTH O.A.	87.90 m	MAIN ENGINE	Deutz MWM SBV 8M628 - 1.500 kW (MGO)
LENGTH B.P.	81.84 m	BOWTHRUSTER	174 kW
BREADTH MLD.	12.80 m	ELECTRICAL VENTILATION	6 AIRCHANGES/HR
DEPTH MLD.	7.10 m	IMO FITTED	YES - VARIOUS CLASSES
SUMMER DRAFT	5.47 m	SERVICE SPEED	10 kn
WINTER DRAFT	5.35 m	MAX UNIFORM LOAD:	
DWT AT SUMMER/WINTER DRAFT	3.710 t / 3.590 t	H 5 B ? H C D . . (%) ' h # a	
DWCC SUMMER/WINTER @ 50% BUNKERS	3.580 t / 3.460 t	HATCH COVERS:	1.53 t/m2
HOLD CAPACITY GRAIN/BALE	4.631/4.600 m3		
CONTAINER CAPACITY: ON DECK	72 TEU		
IN HOLD	108 TEU		
TOTAL	180 TEU		

All details given in good faith but o A Ç • without guarantee

Á Á Á X Á r • Z] %